

# H.265 5M IP IR OUTDOOR DOME CAMERA

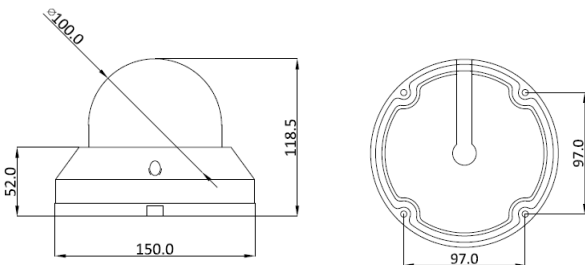
## VVK-NV532VZIR



### Feature

- 1/2.8" 5.69M Sony Image Sensor IMX335
- 2.8~12mm DC Auto Iris Filter Removable
- Motorized Zoom Lens
- Digital Noise Reduction -2D,3D
- WDR
- Privacy Zone
- Motion Detection
- D-fog
- IR LED 32PCS(850nm)
- PoE support IEEE802.3af
- ONVIF Profile S

### Dimension



### Specification

Camera	
Image Sensor	1/2.8" 5.69M Sony Image Sensor IMX335
Effective Pixels	2704(H) X 2104(V), 5.69 Mega Pixels
Scanning System	Progressive Scan
Privacy Mask	On / Off (4 Area Selection )
Motion Detection	On / Off
Electronic Shutter	Automatic: Min. Manual: Min. 1/30 sec ~ Max. 1/30,000 sec
Language	•Korean •English •Japanese •French •Germany
IR LED	Visible 5mm Diameter(850nm, 30° )×32pcs
WDR	DOL True-WDR
White Balance	Manual / Auto / Daylight / Cloudy / Tungsten / Sunset
Visibility Range	Indoor 25M / Outdoor 20M
Lens Type	2.7-13.5mm Motorized lens
Power Supply	DC 12V ± 10% / 1.0A
Power Consumption	DC 12V / 640mA
Operating Temp.	-10 °C ~ +50 °C
Operating Humidity	Less than 90%
Dimension	100(Φ) × 118.5(H) x 150(D)mm
Weight	Approx. 1050(g)

### Hardware

Ethernet Interface	RJ-45 (10/100 BASE-T)
PoE Support	IEEE 802.3af

### Alarm(Optional)

In / Out	1 TTL inputs and 1 TTL output
----------	-------------------------------

### Video

Resolution	2592x1944 (5M), 2592X1520 (4M), 2592X1458 (3.8M), 2304X1296 (3M), 1920x1080 (HD1080), 1280x720 (H720), 1024X768 (XGA), 960X540 (960H), 854X480 (WVGA), 640x480 (VGA), 640x360 (nHD), 352X240 (CIF)
Max. Frame rate	Up to 30fps@2592x1944p
Video Compression	H265, H264, Motion JPEG

### Audio(Optional)

Audio	Line In / Line Out
-------	--------------------

### General

IP	IPv4
Protocol	TCP/IP, HTTP, RTP/RTSP,UDP, DHCP, FTP, SMTP, NTP, ARP, ICMP, DDNS, ONVIF
ONVIF	Yes

※ Design and specifications are subject to change without notice.